

ERMO

Savunma ve Silah San. İth. İhr. Tic. Ltd. Şti.



X-LINE / X-LINE SPECIAL

SAFETY & INSTRUCTION MANUAL



READ ALL THE INSTRUCTIONS AND WARNINGS IN THIS MANUAL CAREFULLY BEFORE USING THIS FIREARM



**PURCHASER'S
RECORD**

Model :

Purchase Date :

Gauge/Caliber :

Serial :

Purchase Price :

Store Name :

TABLE OF CONTENTS

Warnings	3
Safety Rules	4-8
Identifying Marking	8
Description & Specs	9
Nomenclature	9
Safety Button	10
Ammunition	11
Out of The Box Assembly	12
Loading/Firing	13
Unloading	14
Disassembly	15
Reassembly	16
Usage of Choke Tubes	16
Troubleshooting	17-19
Cleaning & Maintenance	19-20
Warranty Conditions	21-23



WARNING - DO NOT DRY FIRE

WARNING

The manufacturer is not responsible for damage to objects caused by misuse of the firearm or for injuries to persons or animals, or in case of death, caused voluntarily or involuntarily by the firearm user. The manufacturer is not responsible for injuries caused by poor maintenance, misuse of the firearm, unauthorized or improper modifications.

The manufacturer declines responsibility for the indirect consequences of any injuries and/or death of persons or animals, damage to objects caused by use of the firearm or by primer explosion, by bullet's ricochet, or unsafe loading practices and/or procedure.

Read the entire manual and learn the proper use of the firearm without live ammunition. It is important that you understand the proper use of this product. The life of the people close to you may depend on your safe behavior.

If the manual is not clear, please contact the dealer where you bought the firearm or call the distributor or the manufacturer by using the contact information provided within this manual.

The manufacturer declines any responsibility for misuse of the firearm. In case of alteration of the firearm, the manufacturer declines any civil and penal responsibility and will not refund any damage.

Quality Inspection: Every firearm is thoroughly inspected by the manufacturer, for function and cosmetic blemish, prior to shipment.

Firearms produced in our U.S. facility or Turkey are scrupulously tested at the manufacturing premises.

▲ WARNING: Discharging firearms in poorly ventilated areas, cleaning firearms, or handling ammunition may result in exposure to lead or other substances known to cause birth defects, reproductive harm, and other serious physical injury. Have adequate ventilation at all times. Wash hands thoroughly after exposure.

SAFETY RULES

- 1.** Read the instructions carefully before use. Reading the manual and careful examination of the firearm are fundamental to avoid any kind of problem.
- 2.** Be aware that you are handling a firearm; therefore your knowledge and behavior may affect your life and those of the people close to you.
- 3.** Firearms and ammunitions must be kept in separate places.
- 4.** Always keep firearm and ammunitions out of reach of children.
- 5.** Store the firearm in a clean, dry and airy place after use to avoid rust in mechanical parts that may cause serious problems in functioning after a period of inactivity.
- 6.** The firearm must always be stored unloaded, always check that the chamber is empty.
- 7.** Keep away from open flames or heating sources.
- 8.** Never leave a loaded firearm unattended.
- 9.** Never leave the firearm loaded, it could fall and cause injury and death. Always point the firearm in a safe direction, and handle it as though it were loaded. This is especially important when loading and unloading the firearm and when handing it to someone else. Never take someone's word that it is unloaded. Always make sure the firearm is unloaded before laying it down or handing it to someone else.

10. After use, clean and lubricate the inside of the barrel with appropriate oil. Grease or oil build up can cause excessive pressure and result in serious personal injuries. Before using the firearm again, inspect the barrel and chamber to make certain that there are no obstructions in the bore. Remove any oil residue with rod and dry patch before shooting.

11. Accumulation of rust in the barrel can cause excessive pressures resulting in serious injury and may cause the explosion of the barrel. A rusted, pitted or eroded barrel should be replaced.

12. Before shooting always check to ensure that the barrel is free of obstructions.

13. Never force a jammed action, this act could cause explosion of the round and consequent injury.

14. Use factory loaded ammunition of the caliber specified on the firearm barrel. Use of different calibers may cause serious personal injuries to you and to people close to you.

15. In case of misfire, manually extract the cartridge from the chamber. If firearm fails to fire when trigger is pulled, as a result of slow primer ignition (hang fire), keep muzzle pointed downrange for a minimum of 30 seconds. If the round does not fire, remove the magazine, clear the firearm and examine the ejected, unfired cartridge. If the indent from the firing pin is off center, light or absent, take the gun to a competent gunsmith. If the indent appears normal compared to other rounds, assume a faulty round, separate from other cartridges, reload and continue shooting.

16. Do not attempt to re-use unexploded ammunitions.

17. Never modify any parts of your firearm. Any alteration may cause serious personal injury and voids the warranty.

- 18.** Only a qualified gunsmith may service the firearm for repair or serious maintenance.
- 19.** Pay great attention during transportation and use. Mechanical safety devices can fail. Developing intelligent, good safety habits is the best way to prevent accidents.
- 20.** Never rest your finger on the trigger until the very moment you wish to shoot. Always keep the safety on until you are ready to safely shoot at an intended target. Note: Safety devices on firearms are extras and are not a substitute for your proper and safe handling practices.
- 21.** Always keep the firearm unloaded when transporting it from home to the shooting areas. Carefully check that cartridge chamber is empty.
- 22.** When you walk around with the firearm in a shooting area, always keep the muzzle pointed in a safe direction.
- 23.** Never run with a loaded firearm, do not cross any obstacle (fences or water courses, etc.) or walk where there is any possibility of slipping or falling without having your firearm unloaded and in safety position.
- 24.** When selecting a place to shoot, always be absolutely sure of your target and the area behind it before you touch the trigger, making sure there is an adequate backstop which will stop and contain bullets. A bullet can travel through or past your target with a range up to 1.5 miles. If you have any doubt, do not shoot.
- 25.** Never shoot against a solid surface or in a pool of water, the projectiles could ricochet and shoot toward any direction. Do not shoot up into the sky.

- 26.** Keep all bystanders behind you, standing beside a shooter is not a safe position. Make sure all other shooters and bystanders are well away from the ejection port.
- 27.** Do not smoke while handling, loading or shooting any ammunition, especially black powder. Keep black powder in a closed container at all times, re-closing the container after each and every use.
- 28.** Never drink alcoholic beverages or take any drugs before or during shooting, as this not only constitutes criminal disregard for your safety and that of others, but will seriously impair your judgment and vision. Never use a firearm while you are taking medication unless you have checked with your doctor to ensure you are fit to handle the firearm safely.
- 29.** Always wear and encourage others near you to wear proper ear protection when shooting, especially on a range since the noise from your firearm and other firearms close to you, could result in permanent hearing loss.
- 30.** Always wear protective shooting glasses to protect your eyes from injury by gun powder, gas, lubricant, dirt or metallic particles, carbon residue, sparks or other debris.
- 31.** Wash hands thoroughly after shooting and handling firearms to remove any unwanted residues.
- 32.** Never leave the loaded firearm or the loaded magazine in the sun.
- 33.** By replica firearms there is no modern safety. In this case you must pay even more attention to safety rules.

REMEMBER:

No mechanical safety device is infallible. The user is responsible for injuries or damages caused to him or to other persons. Complete knowledge of your firearm can make the difference.

IDENTIFYING MARKINGS

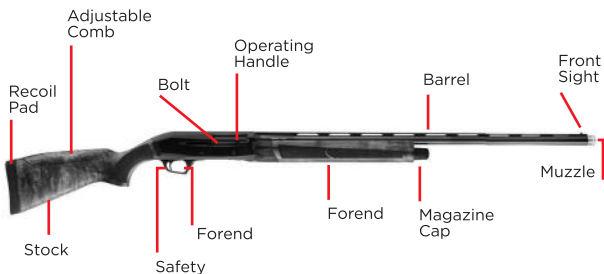
Every firearm we produce has a serial number that is marked on the receiver/frame. Close to the serial number you will also find the manufacturer's information with the model name and caliber marked either on the frame or the barrel as required by law.

These markings must not be removed from the firearm for any reason.

DESCRIPTION

X-LINE and X-LINE SPECIAL Sporting Shotgun is both gas operated and inertia driven. The gas created from firing a live shot shell operates gas pistons unlocking the rotary bolt and cycling the action. Once the first shell has been fired, the next shell in the magazine will automatically cycle into the chamber, and this cycle will continue (each time the trigger is pulled) until all shells loaded in the magazine have been fired. The bolt will remain locked in the open position after the last shell is fired.

NOMENCLATURE



SAFETY BUTTON

The safety is located in front of the trigger guard. It is designed to stop the trigger mechanism. **Do not rely on your firearms' safety, treat every firearm as if it were loaded and ready to fire.** The safety on any firearm is a mechanical device, and it is not intended as a substitute for common sense or safe firearms handling. Always keep the muzzle pointed in a safe direction.

A. Moving the safety button so it protrudes from the right side of the firearm will put the firearm in the safe position, **RED BAND IS "NOT" VISIBLE** (Fig. 1). The safety should always be on until you intend to shoot.



B. When you are ready to shoot the firearm, move the safety button into the fire position so that it protrudes from the left side of the firearm, **RED BAND IS VISIBLE.**

AMMUNITION

X-LINE and X-LINE SPECIAL Sporting Shotgun is a semi-automatic 12-gauge shotgun. It can reliably fire 2-3/4" or 3" shells with a load of 1-1/8 oz to 2 oz.

NOTICE: WE SPECIFICALLY DISCLAIM RESPONSIBILITY FOR ANY DAMAGE OR INJURY WHATSOEVER OCCURRING IN CONNECTION WITH, OR AS THE RESULT OF, THE USE OF FAULTY, OR NON-STANDARD, OR "RE-MANUFACTURED" OR HAND-LOADED (RELOADED) AMMUNITION, OR OF CARTRIDGES OTHER THAN THOSE FOR WHICH THE FIREARM WAS ORIGINALLY CHAMBERED.

- Death, serious injury, and damage can result from the use of wrong ammunition, bore obstructions, powder overloads, or incorrect cartridge components.
- Use only ammunition specifically recommended for your firearm (the caliber is specified on the barrel, cylinder or frame).
- Always use cartridges whose length is equal or inferior to that indicated on the barrel.
- Use only high quality, original factory manufactured ammunition whose pressure cannot be higher than the one stated by S.A.A.M.I. or C.I.P.
- Your firearm has been designed for ammunition of a specific caliber - do not alter the barrel, chamber, caliber for which your gun was designed.
- Be sure you never mix ammunition.
- Firearms may be severely damaged, and serious injury to the shooter or others may result from any condition causing excessive pressure inside the chamber or barrel during firing.

Excessive pressure can be caused by obstruction in the barrel, propellant powder overloads, or by the use of incorrect or defectively assembled cartridges. In addition, the use of a dirty, corroded or damaged cartridge can lead to a burst cartridge case and consequent damage to the firearm and personal injury from the sudden escape of high-pressure propellant gas within the firearm's mechanism.

OUT OF THE BOX ASSEMBLY

In the packaging, firearm is divided into two parts: receiver and barrel (Fig. 2).



Follow the steps below to assemble the barrel:

1. Unscrew the magazine cap (Fig.3) and remove the forend (Fig.4).
2. Insert barrel into receiver and over magazine tube (Fig.5). Place forend spacer over pistons and forend over the magazine tube into the receiver (Fig.6).
3. Screw the magazine cap onto the threaded magazine tube and hand tighten (Fig.7).



Items included with firearm:

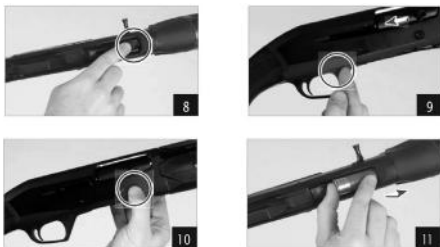
- Choke Tubes: For use when changing pattern of shot (See 'Usage of Choke Tubes').
- Choke Tube Wrench: For use when tightening choke tubes into barrel.
- Allen Wrench: For use when changing height and left/right position of adjustable comb.

Note: Before shooting, use Choke Tube Wrench to ensure Choke Tube is fully seated.

LOADING/FIRING

 **CAUTION:** Be sure the safety is in the safe position and the barrel is pointed in a safe direction.

1. Push in the carrier on the bottom of the receiver and make sure there are no cartridges in the magazine tube (Fig. 8).
2. Press the carrier latch and pull the bolt rearward locking into rear position (Fig. 9).
3. Visually inspect chamber for no cartridge then press the bolt release button (Fig. 10).
4. Begin loading the shotgun from the bottom by pushing cartridge through the carrier and into magazine tube until it is retained by the magazine release button/shell stop (Fig. 11). Continue loading cartridges until desired amount is reached (5 Max . of 2-3/4" Cartridges).
5. Press the carrier latch then pull and release the bolt. This will feed a cartridge into the chamber. An additional round can now be loaded into the bottom of receiver if desired.



You are now ready to fire your shotgun. Be sure the barrel is pointed in a safe direction, move the safety button into the fire position so that it protrudes from the left side of the firearm, **RED BAND IS VISIBLE**. Pull the trigger to fire the shotgun.

When the magazine is empty, the bolt will lock back in the rear position. Move the safety button into the safe position so it protrudes from the right side of the firearm, **RED BAND IS "NOT" VISIBLE**. Visually check that the chamber is empty. Press the bolt release. Your shotgun is now unloaded and safe.

UNLOADING

! CAUTION: Be sure the safety is in the safe position and the barrel is pointed in a safe direction.

1. Press the carrier latch (Fig. 12).

2. Pull and release the bolt. Repeat this step until all cartridges are cleared (Fig. 13).

3. Bolt will lock in rear position once all cartridges are cleared.



DISASSEMBLY

 **CAUTION:** Make sure the firearm is unloaded.

1. Remove the operating handle by turning and pulling outward to disengage detent (Fig. 14).
2. Remove magazine cap (Fig. 15).
3. Remove barrel and forend by sliding forward (Fig. 16).
Note: Forend is 2 pieces.
4. Remove gas cylinder plugs by turning counterclockwise (Fig. 17). Note: Do not attempt to disassemble the gas cylinder plugs.
5. Remove gas pistons from barrel (Fig. 18).
6. Remove bolt assembly from receiver (Fig. 19).
7. Push the trigger group pin in and remove from the left side of receiver (Fig. 20).
8. Remove the trigger group from the receiver (Fig. 21).



REASSEMBLY

As with most firearms, reassembly is carried out in the reverse order of disassembly.

USAGE OF CHOKE TUBES

The choke controls how open or tight the pattern of the shot will be. The constriction chart below lists chokes from open to tight and the corresponding marks or notches that indicate the specific choke.

TYPE OF CHOKE	12 GA.	20 GA.	28 GA.	.410 BORE	NOTCHES
C = Cylinder	.000"	.000"	.000"	.000"	
S = Skeet	.005"	.004"	.003"	.002"	
IC = Improved Cylinder	.009"	.006"	.005"	.004"	
M = Modified	.019"	.009"	.012"	.008"	
IM = Improved Modified	.025"	.019"	.016"	.011"	
F = Full	.035"	.025"	.022"	.015"	

Never fire your firearm or run cleaning tools through a barrel that uses a choke tube without having a choke installed. The threads of the choke tube and the internal threads of the barrel should be cleaned after each use and before installation of the tube.

To install a tube, insert the tube into the top of the barrel and tighten with your fingers. Once the tube is finger tightened, tighten the rest of the way with the appropriate choke tube wrench until the tube is snug. Do not over tighten or forcefully tighten with wrench.



WARNING: Steel Shot Usage

The choke (bore constriction) in all modern shotguns has been established based on the pattern performance of shot shells loaded with lead shot. When using steel shot shells you will notice a different performance in pattern density versus the established lead shot pattern, because the steel shot is harder and lighter than lead shot.

You should be aware of the following differences and cautions: Never shoot steel shot loads in a full chokes barrel or an improved modified choked barrel. Doing so, might cause the barrel to swell or rupture. In general, steel shot fired with a modified choke will produce the equivalent of a lead full choke pattern. This will be true of all steel shot sized up to an including No. 2. The established improved cylinder chokes will produce the equivalent of a (lead) modified pattern.

All steel shot larger than No. 2, and including special sized such as F, T, etc., should be used only with improved cylinder chokes. These steel shot sizes, when used in an improved cylinder choke, will produce the equivalent to (lead) full choke patterns. The established cylinder choke or bore will produce the equivalent of a modified (lead) pattern.

Additional information concerning the use of steel shot is available from the ammunition companies.

TROUBLESHOOTING

Immediately stop shooting and safely check the barrel for a possible obstruction whenever:


- You have difficulty in, or feel unusual resistance in chambering a cartridge.
- A cartridge misfires (does not go off).
- The mechanism fails to extract a fired cartridge case.
- Unburned grains of propellant powder are discovered spilled in the mechanism.
- A shot sounds weak or abnormal.

In such cases it is possible that a bullet is lodged part way down the barrel. Firing a subsequent bullet into the obstructed barrel can damage the firearm and cause serious injury to the shooter or bystanders.

Bullets can become lodged in the barrel:

- If the cartridge has been improperly loaded without propellant powder, or if the powder fails to ignite. Ignition of the cartridge primer alone will push the bullet out of the cartridge case, but usually does not generate sufficient energy to expel the bullet completely from the barrel.
- If the bullet is not properly seated tightly in the cartridge case. When such a cartridge is extracted from the chamber without being fired, the bullet may be left behind in the bore at the point where the rifling begins. Subsequent chambering of another cartridge may push the first bullet further into the bore.
- If there is any reason to suspect that a bullet is obstructing the barrel, immediately unload the firearm and look through the bore. It is not sufficient to merely look in the chamber. A bullet may be lodged some distance down the barrel where it cannot easily be seen. If a bullet is in the bore, do not attempt to shoot it out by using another cartridge, or by blowing it out with a blank or one from which the bullet has been removed. Such techniques can generate excessive pressure, damage the firearm.
- Dirt, corrosion, or other foreign matter on a cartridge can impede complete chambering and may cause the cartridge case to burst upon firing. The same is true of cartridges which are damaged or deformed.
- Don't oil cartridges, and be sure to wipe the chamber clean of any oil preservative before commencing to shoot. Oil interferes with the friction between cartridge case and chamber wall that is necessary for safe functioning, and subjects the firearm to stress similar to that imposed by excessive pressure.

- Use lubricants liberally on the moving parts of your firearm. Avoid excessive spraying of any aerosol gun care product, especially where it may get on ammunition. All lubricants, and aerosol spray lubricants in particular, can penetrate cartridge primers and cause misfires. Some highly penetrative lubricants can also migrate inside cartridge cases and cause deterioration of the propellant powder; on firing, the powder may not ignite. If only the primer ignites, there is a danger that the bullet may become lodged in the barrel.

 **WARNING:** The accidental loading and discharge of shells of the wrong gauge in your shotgun can result in damage to your gun and possible injury or death to you or others. To be safe at all times, carry only the proper gauge ammunition with you for the gun you are using. The use of reloaded or improper ammunition voids the warranty.

CLEANING & MAINTENANCE

 **CAUTION:** Before conducting any sort of maintenance, make sure the firearm is unloaded.

1. Make sure the broad, polished finely fitting mating surface of the breech block and receiver is especially clean and lightly oiled with high quality gun oil. Do not use silicone, lanolin or WD-40.

2. Run an oil patch through the bore with a cleaning rod starting from the breech end. To prevent leading, use a cleaning solvent and brass brush to clean the bore periodically. Follow this cleaning with one or two clean oil patches. Important: If your gun is equipped with choke tubes, do not use a brass brush to clean the barrels without having a choke tube installed. Barrels that utilize choke tubes must also have the choke tubes removed to clean and oil the threads inside the barrel and the choke

tubes themselves. This will protect the threads and prevent dirt build up that can cause tubes to become difficult to remove.

Never fire your gun without choke tubes completely tighten in barrels. Do not over tighten choke tubes. Wipe all exposed metal surfaces with an oiled cloth before storing. Do not squirt or pour oil into the mechanism because it may hamper proper functioning and will soak into the wood. After extended periods of heavy use, your gun should be taken to a qualified gunsmith to have the action disassembled for professional cleaning and lubrication.

3. If applicable, care for your wood stock and forearm the same way you would a piece of furniture with the same finish.

If the firearm has a problem that you cannot fix, DO NOT FIRE, send it to a qualified gunsmith. If you try to fix it personally, you may put yourself and people near you in serious danger.

STORAGE

Clean thoroughly and oil your firearm before storage. Store the firearm in a case to prevent scratches and dents. Store your firearm in a dry place to prevent corrosion. Store the firearm away from children and in a place where it cannot be obtained by those unauthorized to use it. Always store firearm unloaded and separately from and ammunition.

HAZARDOUS MATERIAL WARNING

Discharging firearms in poorly ventilated areas, cleaning firearms, or handling ammunition, may result in exposure to lead and other substances known to cause birth defects, reproductive harm, and other serious injury. Have adequate ventilation at all times. Wash hands thoroughly after exposure.

THANK YOU

Thank you for purchasing your firearm from us. We are certain it will bring you years of hunting and/ or shooting pleasure. Your satisfaction is the key to our success. Please let us know if we can be of service and relay and observations about your firearms' performance or appearance.

WARRANTY CONDITIONS

This warranty policy only applies to ERMOX products.

The manufacturer guarantees that our products are scrupulously checked against defects in materials, workmanship, aesthetics and functioning problems. In case you find a defect in one of our products, you should immediately contact ERMOX Savunma ve Silah Sanayi Kavaklı Mh. H. Fehmi Boztepe Cd. No:164/A Manavgat / ANTALYA - Tel: 0242 746 19 89. All warranty work will be performed by ERMOX Savunma ve Silah Sanayi.



ATTENTION: All customers returning product for warranty service must first obtain an RMA (Return Merchandise Authorization) from ERMOX Savunma ve Silah Sanayi. The request for an RMA (Return Merchandise Authorization) may be obtained through our web site, email or phone.

Information required is name and address, model, serial number, and defect. It is the customer's responsibility for adequately packaging the product to prevent shipping damage. Any damages occurred during transportation and handling will be the customer's responsibility.

ERMOX Savunma ve Silah Sanayi 2-year warranty guarantees for two years after the original purchase date of the original owner, free parts and labor for defects which have been found during use; wear of parts which shouldn't be subject to wear, or excessive wear of parts subject to wear except for wood. Wood is covered for 1 year. The


customer must provide evidence they are the original owner and proof of the purchase date with a receipt or other valid proof.

In the event of a defect which is covered by this guarantee is not repairable, the manufacturer will provide for a free substitution of the product.

THE MANUFACTURER RESERVES THE RIGHT OF DEFINING THE TYPE OF DEFECT OF THE FIREARM AND THEREFORE TO STATE WHETHER THE DEFECT IS COVERED BY GUARANTEE.

The manufacturer's decision will be fair but final. Should the manufacturer become aware of a defect of a product during the guarantee period, the defective part will be replaced free of charge.

The guarantee does not cover parts subject to wear and corrosion. For assistance in obtaining an RMA (Return Merchandise Authorization), please contact ERMOX Savunma ve Silah Sanayi

 **ATTENTION:** DELIVERY EXPENSES TO AND FROM THE SERVICE CENTER ARE NOT COVERED BY THE GUARANTEE AND WILL BE CHARGED TO THE CUSTOMER.

WARRANTY CONDITIONS

The Guarantee Is Void In Case:

- Inadequate ammunition has been used (any ammunition but those commonly on sale, reloaded ammunition, different from caliber and specification indicated on the firearm barrel)
- The product failed to be provided proper maintenance and cleaning

- The product has been modified without our prior consent
- Unauthorized, inadequate or incorrect repairs have been carried out
- Non-original spare parts were used
- Parts subject to wear and corrosion
- Damage (improper use of the gun by the user)
- Expired guarantee

In the above cases the repair, if completed, will be charged to the customer.

In case, for any valid reason, you do not have the possibility to obtain repair under guarantee at the shop where you bought the product, you may contact us directly for warranty service or questions:

ERMOX Savunma ve Silah Sanayi

Adress: Kavaklı Mh. H. Fehmi Boztepe Cd.
No:164/A Manavgat / ANTALYA

Phone: 0242 746 19 89

e-mail: service@ermox.com.tr

Mo. - Fr. 8am-4pm

THIS MANUAL MUST ALWAYS FOLLOW THE FIREARM,
ALSO IN THE EVENT OF NEW OWNERSHIP.

ERMO

Savunma ve Silah San. İth. İhr. Tic. Ltd. Şti.



ermox.com.tr

info@ermox.com.tr

+90 332 516 15 00

+90 544 649 28 47

Huđlu Mah. 43206. Sk. No:5

Beyşehir / Konya - Turkey